



Annual Report

Fiscal Year
2023



Corporate Headquarters

100 Summit St.
Brighton, MI 48116
(810) 227-4868 | wskills.com



WORK SKILLS CORPORATION

Annual Report

Website : www.wskills.com



TABLE OF CONTENTS

Website : www.wskills.com

Letter to the Community	_____	04
Mission, Vision & Values	_____	05
Celebrating 50 Years	_____	06
Learning: Programs & Highlights	_____	08
Working: Programs & Highlights	_____	14
Living: Programs & Highlights	_____	18
WSC Annual Awards	_____	22
Leadership & Board of Trustees	_____	28
Financials: Total Revenue & Total Expenses	_____	32
Vision Partners	_____	34

Letter to the Community

Dear Stakeholders, Employees, Customers, and Partners,

This year, Work Skills Corporation celebrates our 50th anniversary. As we pause to reflect on our journey, we are reminded of the countless lives that we have positively influenced in the areas of learning, working, and living. For five decades strong, our talented and resilient team has steadfastly served individuals, families, and the community at large.

That focus continued in 2023, a year of immense significance as we commemorate our 50th anniversary.

In 2023, we had much to celebrate:

EXPANSION: We expanded Artisan Corner with the addition of a spacious 1,200 sq ft new art room.

RENOVATION: The renovation of 1279 Rickett Road allowed us to accommodate the growth of WSC Staffing.

INVESTMENT: We acquired 5+ acres of vacant land adjacent to our corporate office, paving the way for future growth.

MISSION & VISION: Our Mission and Vision statements were thoughtfully revised, offering a clearer definition of our identity and purpose.

REBRANDING: We proudly unveiled our rebranding initiative to highlight our Learning, Working, and Living Services.

AWARDS & RECOGNITION:

» **Congressional Award and Special Tribute from the State of Michigan** for our dedicated work with people with disabilities over the past 50 years.

» National and Local **Best and Brightest** recipient for being one of the best employers to work for nationwide.

» **Best of Mich Business** recipient.

In closing, I want to emphasize my pride in WSC's last 50 years. As we look to the future with innovation, growth, and adaptability, I am confident that WSC will continue to shine as a beacon of excellence in our industry.

Thank you for being an integral part of this incredible journey.

Sincerely,
Tina Jackson

PRESIDENT & CEO





Our **Mission**

Work Skills Corporation's mission is to optimize potential in learning, working, and living by delivering services tailored to underserved individuals, businesses, and communities.



Our **Vision**

To enrich the lives of individuals in our communities, dedicating ourselves to serve with excellence and commitment.

Our **Values**



Wellbeing & Success



Strategic Innovation



Community & Teamwork

Celebrating 50 Years...

In 1973, a visionary group of parents came together to form Work Skills Corporation (WSC), driven by their deep concern for the limited vocational support available to graduating students with diverse needs and abilities. These graduates, upon completing their formal education, faced a daunting void with no avenues for job training or employment.

In 1978, Rod Jones joined the organization, and over the next 41 years, he passionately worked to transform the small enterprise into a thriving venture. Jones was determined to make Work Skills Corporation self-sustaining, channeling his inventive spirit and unwavering energy into this mission. The grassroots collective of concerned parents gradually blossomed into a fully-fledged business operation, a testament to Jones's indomitable spirit and resourcefulness.

Half a century since its inception, WSC has not only grown but also thrived, reflecting the vision of its founders and the commitment of those who have nurtured its mission through the years. What began with a modest annual budget of \$50,000 in 1978 has now evolved into an organization with annual revenues reaching \$20 million. WSC's enduring mission has always been to pioneer innovative programs that empower participants to engage in meaningful work within authentic manufacturing environments, ultimately paving the way for them to secure competitive employment opportunities within our community.

WSC's current mission has evolved to increase the realized potential of our community, businesses, and the underserved by delivering learning, working, and living services.

As we celebrate five decades of unwavering dedication, it's clear that WSC's impact extends far beyond its founding vision of providing employment and training services to people with disabilities. This remarkable journey stands as a testament to the transformative power of compassion, innovation, and the commitment to creating a more inclusive and equitable society. Congratulations to Work Skills Corporation on reaching this monumental 50th anniversary milestone, and here's to many more years of making a difference in the lives of individuals with diverse abilities!



Pictured: Rod Jones (Former WSC President/CEO) poses in front of WSC's honorary building dedication sign located at the Work Skills Corporate Office in Brighton, MI.

Celebrating 50 Years... (cont.)

In 2023, Work Skills Corporation (WSC) was honored with a Congressional Award and a Special Tribute from the State of Michigan. The Congressional award, presented by a representative from the office of Representative Elissa Slotkin in Livingston County, recognizes WSC's exceptional contributions in transforming lives through innovative vocational programs that empower participants to acquire valuable skills and earn competitive wages. Additionally, WSC received a special tribute from Michigan Senator Lana Theis, recognizing the organization's substantial community impact and dedication to enhancing lives throughout the state, one opportunity at a time.



Tina Jackson (WSC President/CEO) accepts Work Skills Corporation's Congressional Award on behalf of WSC from Representative Elissa Slotkin's office during the 50th Anniversary Open House.

Community Impact:

Over Half a Century Pioneering Innovative Vocational Support



50,000+

Total Participants Served
Since 1973



\$116,636

in Artisan Corner Artists
Commission Since 2010



\$25,277,012

in Participant Worker
Wages



\$50,000,000+

Earned by Staffing
Employees

LEARNING

Acquiring Knowledge, Skills, or Understanding.



Programs & Services

Artisan Corner

Fostering Creativity, Skills, and Sales

Empowering individuals to explore their artistic talents, unleash creativity, and showcase and sell their unique creations in an innovative space.

Clinical Services

Therapeutic Options for All Ages

Providing a range of therapy programs, including Speech-Language Pathology (SLP), Applied Behavior Analysis (ABA), and Occupational Therapy (OT), for both children and adults. Our flexible care network provides options for in-home, in-clinic, virtual, or hybrid services.

Training Solutions

Elevating Skills for Success

Delivering top-notch live and virtual courses in leadership, diversity, emotional intelligence, and resilience. Tailoring custom learning experiences to address specific needs and bridge skills gaps.

CLINICAL SERVICES

From Silence to Self-Advocacy

When Jacob as a young boy from a trauma background came to WSC's Speech and Language Program he initially communicated primarily through gestures and vocalizations, with only a few functional words like "eat" and "drink."

Emotional and social situations presented him with particularly challenging obstacles. In a collaborative effort with his family and educational institution, an Augmentative and Alternative Communication (AAC) device was introduced to his daily regimen.

The transformation was extraordinary. Jacob went from isolated vocalizations to constructing full sentences, effectively communicating his needs, wants, and even complex thoughts. Weekly updates from his guardian confirm his newfound ability to advocate for himself in situations that would previously lead to emotional meltdowns.

Academically and socially, Jacob has been thriving, showing an understanding of even complex concepts like humor. This remarkable evolution serves as a vivid testament to the transformative capabilities of the Speech-Language Pathology (SLP) program, emphasizing how targeted intervention and technological tools can turn communication challenges into life-changing opportunities.

PROGRAM SUCCESS STORY

Jacob's Journey

CLINICAL SERVICES

SLP Program Expansion: Program Expands to Include Occupational Therapy

Our speech and language pathology program has grown remarkably, a testament to our dedication to client-focused services. Our community's resounding endorsement has reaffirmed our mission and spurred us on to expand and enhance our current offerings. To that end, we are thrilled to weave in occupational therapy to our suite of services.

This new addition not only reinforces our commitment to addressing speech and language challenges, but also ensures we cater to the broader developmental and functional needs of persons served.

Every milestone we have reached, every success story we have celebrated, can be attributed to the incredible support and trust of our persons served and their families. Their belief in our mission is our driving force, and for that, we remain deeply grateful and inspired. With profound gratitude, we look forward to weaving even more success stories, filled with love, growth, and endless possibilities.



LEARNING

IMPACT

WSC Artisan Corner celebrated a vibrant community of *58 talented artists* with several of them earning recognition and awards at both local and national levels.

Invested more than *\$455,000* in ABA programming to local families of autistic youth.



PROGRAM SUCCESS STORY

Emily's Journey

CLINICAL SERVICES

Unlocking the Power of Communication

When Emily initially joined the WSC Speech and Language Program, her communication abilities were limited to just a handful of functional words, and maintaining her attention on a single task for more than a minute or two was a challenge.

To address these difficulties, a dedicated and rigorous speech therapy regimen was established, with sessions held four times a week.

The transformation has been nothing short of remarkable; Emily's vocabulary has expanded rapidly, enabling her not only to mimic new words but also to utilize them effectively and appropriately in various contexts.

She can now construct 2-3-word phrases to express her thoughts, make requests, and engage in conversations. Beyond her language development, Emily's play skills have made significant progress; she can now independently and cooperatively participate in structured play activities with her peers.

Emily's journey exemplifies the profound impact of the WSC Speech and Language Program, demonstrating how focused and intensive interventions can revolutionize a child's ability to communicate and interact socially.

TRAINING SOLUTIONS

Bridging the Skills Gap: Committing to Leadership Training

For decades, Work Skills Corporation has been at the forefront of leadership training, offering robust programs designed to meet the changing needs of the workforce.

Recently, WSC set out to form a strategic partnership with the forward-thinking collaborative, Ann Arbor SPARK. Our shared goal was to develop a comprehensive Talent Pipeline Management program aimed at not just bridging the skills gap but also empowering individuals and organizations across various sectors.

The program included online courses offering Continuing Education Units, cutting-edge Virtual Reality training, practical On the Job Training and Soft Skills training that covered vital areas such as Problem Solving, Communication, and Leadership. To emphasize our commitment to providing top-tier leadership training, we attained certification in the Wiley (DiSC Work of Leaders) methodology, a standard established by this renowned global leader in assessments and leadership development.

This certification not only enhanced our curriculum but also ensured that the skills we impart to our participants remain validated, pertinent, and meaningful.

Today, WSC's Training Department takes immense pride in its versatile leadership curriculum. Adaptable to the unique needs of frontline leaders and customizable for executive teams, our programs are designed to equip leaders with the necessary tools to navigate the challenges of an ever-evolving business environment.

Training Solutions
powered by **WSC**

AUTHORIZED PARTNER

EVERYTHING **DiSC**
A Wiley Brand

ARTISAN CORNER

13 Years of Artisan Corner's Unique Artistry

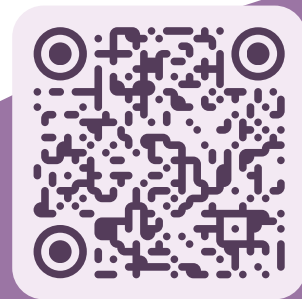
WSC Artisan Corner began over 13 years ago as a modest internal program, and today it stands as a robust platform for training, development, and retail.

To date, we've had the privilege of working with 37 dedicated professional artists, with a cumulative total of over 150 artists participating in our program throughout the years. Each artist is given the freedom to delve into mediums that resonate with their individual styles. This has led to a wide range of creations, including paintings, fiber arts, ceramics and jewelry.

We are excited to announce that several pieces crafted by our artists have been showcased on tour this year. Notably, Zach D's remarkable "Starry Night Crossover" has traveled through four states since April. Our participation also extends to platforms like ArtPrize Hartland Size - Artwalk, Livingston Diversity & Cultural Art, Food, & Dance Celebration, and Source America in Anaheim, CA.

For those interested in acquiring a piece of this artistry, the Artisan Corner remains open from Monday to Friday. We also cater to customized requests with pop-up boutique shopping, offer curated gift baskets, and run a dedicated Etsy shop online. Every purchase supports our artisans. Join our growing community on Facebook & Instagram to see these artist and their creations!

Shop the Artisan Corner Boutique on Etsy!



SCAN HERE



WORKING

Empowering Employment with Customized
Vocational Support

Programs & Services

Employment Services

Empowering Career Success

Guiding individuals toward meaningful employment opportunities that match their strengths, preferences, abilities, and potential.

Production

Skills and Solutions in Action

Integrating vocational skill development with essential tasks like assembly, kitting, and packaging. A unique hands-on training approach meeting production needs.

Staffing

Bridging Talent with Opportunity

Providing comprehensive temporary and direct hire solutions across diverse industries, efficiently meeting staffing needs for both entry-level and professional candidates.

EMPLOYMENT SERVICES

Rising Above Limits with Work Skills

PROGRAM SUCCESS STORY

Brianna's Journey

Brianna was referred to Work Skills Corporation (WSC) by Michigan Rehabilitation Services following her high school graduation to participate in the WSC's Job Readiness and Job Placement programs.

With the support of the Work Skills team, she began by honing her resume and improving her interview skills. Additionally, she learned valuable soft skills like communication, teamwork, and time management. With these newly acquired skills, Brianna went on to secure a part-time position at an arts and crafts store. Brianna's enthusiasm and dedication were recognized by the outstanding feedback from customers as well as her manager.

Brianna is now on her way to obtaining her bachelor's degree in graphic design. Brianna's success is a reminder that with the right support and the determination to learn and grow, the sky is the limit!



STAFFING

Resources for Employees

In the ever-evolving job market of today, WSC Staffing plays a pivotal role as a bridge between job seekers and organizations in need of their skills and expertise. Our unwavering commitment revolves around providing extensive support to employees, with the aim of simplifying the job search and career development processes.

Our dedication to employees transcends job placements. In addition to our core services, WSC Staffing takes a proactive approach to identify individuals who may encounter barriers to employment. We firmly believe that everyone, regardless of the obstacles they face, should have equal opportunities to achieve their career goals. To this end, we connect employees to supportive services including assistance in areas such as education, housing, substance abuse treatment, transportation support, physical or mental health treatment, childcare, and financial management.

At WSC Staffing, we are committed to empowering all employees, recognizing that each individual's journey may be unique. Our ultimate goal is to ensure that every employee, regardless of their circumstances, can successfully navigate their career path and achieve their professional aspirations.

WORKING

IMPACT

Provided pre-employment transition services to **113** at-risk students, aged 14-26, to equip them for a successful transition into the workforce.

Delivered therapeutic services to individuals recently paroled, aiming to foster positive and constructive thinking while equipping them with practical tools for a successful reintegration into society.

Offered on-site production jobs and training services to **104** people with barriers to employment.

Assisted over **1,200** unemployed individuals in obtaining employment within the community.



PROGRAM SUCCESS STORY

Randy's Journey

PRODUCTION

From Chef to Production Coordinator

In March 2022, Randy made a significant career shift, leaving behind his chef's apron to embark on a new adventure at WSC Production Services.

With nearly a decade of experience in the restaurant industry, the challenges brought on by the pandemic encouraged him to seek a more stable work environment.

Starting his journey as a material handler, Randy wasted no time. In just a few months, he accelerated through Forklift training, obtained a chauffeur license, and became proficient in operating both a box truck and a transit vehicle.

This rapid acquisition of skills enabled him to diversify his role, eagerly taking on additional responsibilities and any tasks that required completion. Recognizing the potential for career growth, Randy seized an opportunity and applied for, ultimately securing, the position of Production Coordinator.

His journey at WSC Production Services serves as a testament to his adaptability, unwavering commitment to learning, and dedication to embracing the ever-evolving nature of his role. He is not merely an employee; he embodies a story of resilience and personal growth within our WSC family.

LIVING

Embracing Life and Building Community

Programs & Services

Residential Services

Empowering Independence, Enriching Lives

Providing customized program options like homelike settings and supported apartments to help individuals achieve their highest level of independence. Our thoughtfully designed services foster personal growth and self-sufficiency.

Home Care

Compassionate Care, Right at Home

Delivering dependable, personalized home care services that enable clients to stay in the comfort of their own homes while receiving top-quality care. This individualized approach creates a nurturing atmosphere for clients and their families.

RESIDENTIAL SERVICES

Community Integration: WSC's New Innovative Home

In recent years, the plight of adults with Intellectual or Developmental Disabilities (IDD) seeking a conducive living environment in Livingston County has gotten attention.

The shortage of appropriate residential facilities not only posed challenges for those seeking to transition from family homes but also led to the displacement of over 40 residents outside the county.

WSC Residential Services, recognizing this pressing need and driven by requests from community partners, embarked on a four-year journey to establish a residential haven for this underserved population.

Understanding the unique sensitivities of those with intellectual and developmental disabilities, we prioritized the creation of an environment that resonates with tranquility where every corner of the home has been scrutinized for potential stress triggers, with remedial actions taken to ensure a harmonious living environment.

Amid the challenges of 2020, WSC embarked on a journey to transform a seven-acre expanse of wooded terrain into a tranquil residential oasis. By early 2023, after careful refurbishment, this picturesque property reached its full residential capacity. At WSC Residential Services, our vision was to not just provide a home, but a sanctuary where every individual feels valued, understood, and at peace.



[Explore the home on page 21](#)

HOME CARE

Empowering Independence: Cheryl's Decade of Success

PROGRAM SUCCESS STORY

Cheryl's Journey

In the past decade, Cheryl's story has been one of unwavering determination and resilience. When faced with the need for frequent support, she refused to compromise on her independence and quality of life. Work Skills Corporation stepped in with 24/7 attendant care, allowing Cheryl to continue residing in her beloved apartment.

This ten-year journey has showcased the transformative power of personalized care, enabling Cheryl not only to maintain her independence but to thrive in her community. Her story serves as a shining example of what is possible when individuals receive the right support and care to pursue their dreams.

Cheryl's success is not only about survival; it's about embracing life's pleasures.

With the ongoing assistance of her caregivers, she finds joy in the simple things like getting her nails done, savoring the feeling of self-care. Her passion for drama and criminal investigation shows on TV has become an enriching source of entertainment and connection with the world beyond her apartment's walls. Cheryl's story is a testament to Work Skills Corporation's commitment to empowering individuals to live life on their own terms independently.

LIVING

IMPACT

By delivering exceptional dedicated in-home care, we ensure that our diverse clientele can maintain their independence locally. Each year, we invest **\$128,700** annually to guarantee their ability to remain within the county and stay connected to their community.

Provided a safe and supportive living environment with round-the-clock care, assistance, and supervision for **20 individuals** with barriers.

Genoa Home





**VOLUNTEER
OF THE YEAR**



JULIE AMMAN

WOMEN OF WORK SKILLS MEMBER / VOLUNTEER



Julie's Journey

Julie has been volunteering in Artisan Corner for well over a year. She immediately connected with our participants when she came for a tour. Julie retired from Livingston County Catholic Charities, home to Special Ministries, so this made total sense – so many familiar faces here at WSC.

Julie loves to provide one on one support to the artisans, and they love working with her. She gently encourages and helps them on challenging projects. She also plays a vital role on our team by organizing supplies and projects, cleaning, and bringing her own kind of sunshine every Thursday afternoon.

Artisan Corner moved into a new twice-the-size space in October 2023 and Julie graciously stepped up to help us make it a smooth transition. Julie has given us more than the gift of her time; she joined WoW (Women of Work Skills Foundation) in January. Support from WoW members ensures that WSC programs and services will continue to be available for years to come.

Thank you, Julie, for the many ways you support us. We appreciate you and are so pleased to honor you with this award.





***PARTICIPANT
OF THE YEAR***



MIA BROWN

PROGRAM PARTICIPANT



Mia's Journey

Mia embarked on a transformative journey in November 2022, with a clear goal in mind: to graduate high school and equip herself with the tools necessary to navigate the world confidently. She recognized the importance of skills like advocating for herself, understanding others' perspectives, honing her problem-solving abilities, setting boundaries, and being astute in identifying negative influences. Mia did not shy away from the hard work needed to develop these skills, and her unwavering dedication and resilience led her to success.

Throughout this transformative period, Mia received invaluable support from Work Skills Corporation (WSC). WSC played a crucial role in assisting her on her path to success, helping her develop her skills, assisting her with setting and maintaining boundaries, and gaining the confidence needed to thrive in her personal and professional life. Mia has successfully graduated high school and took on the dual responsibilities of working and going to school, showcasing her exceptional work ethic and determination. She is now pursuing her passion for cosmetology, setting her sights on a career that allows her creativity to shine. Mia is a vibrant and resilient individual who has not only survived but thrived in her journey, a shining example of strength, growth, and success. We are very proud of all that she has accomplished and look forward to celebrating her next steps of her journey as we continue to partner in her remarkable transformation.



**COLLABORATOR
OF THE YEAR**



W.A.V.E.S.

WALLED LAKE ADULT TRANSITIONS PROGRAM



Since its inception in 2019, the collaboration between Walled Lake Consolidated Schools' W.A.V.E.S program and Work Skills Corporation has delivered outstanding results. Through our united efforts we have provided students with structured learning experiences, and in the previous year alone, 53 students gained invaluable vocational exposure, both within the school premises and in the broader community, thanks to our various business host sites. These curated experiences are specifically designed to equip these students with a diverse set of transferable skills, which are essential for their success in both postsecondary education and the professional world.

At the heart of this alliance is our shared belief in the power of collaboration, especially when it comes to delivering top-tier secondary transition services for young adults with disabilities. Time and again, research has underlined the profound impact of such collaborative efforts on enhancing the postsecondary outcomes for these young individuals.





Leadership Team

Executive Team

Tina Jackson President and CEO	Anita Jones Chief Operating Officer	Suzy Murphy Vice President
	Tom Jones Vice President	

Management Team

Lori Koziara Controller	Kacey French HR Manager	Julie Smith Development Manager
Amy Sheibar Residential Administrator	Erika Kolb Director of Nursing	Marcia Ransom Employment Services Manager
Natasha Flemings Director of Clinical Services - ABA	Taylor Picano Director of Clinical Services - SLP	

Pictured Above (in order of appearance L to R):
Taylor Picano, Amy Sheibar, Anita Jones, Tina Jackson, Suzy Murphy, Erika Kolb, Shonda Rushing (Guest Speaker from STEP), Julie Smith, Kacey French, Natasha Flemings, Lori Koziara, Marcia Ransom, Tom Jones.



Board Members

Board of Trustees

Terry L. Braciszewski
Chairperson

Jonathan Porta
Vice Chair Person

David Plait
Treasurer

Marcia Gebarowski
Secretary

Edward Bottum

David Christensen

Edward Copp

James Darga

Darcy Hoyes

David Johnson

Kevin Johnston

Pamela McConeghy

George Moses

Mike Murphy

Meg Novacek

Anna Belser
Emeritus

Pictured Above (in order of appearance L to R): James Darga, Jonathan Porta, Marcia Gebarowski, David Christensen, Mike Murphy, Terry L. Braciszewski, Darcy Hoyes, David Johnson, Edward Copp, Edward Bottum, Pamela McConeghy, George Moses, Meg Novacek | Not pictured: Kevin Johnston, David Plait

Board of Directors



Terry L. Braciszewski, Ph.D
Chairperson



Jonathan Porta
Vice Chairperson



David Plait
Treasurer



Marcia Gebarowski
Secretary



Edward Bottum



Dave Christiansen

Not pictured:

Anna J. Belser

Emeritus



Edward Copp



James Darga



Darcy Hoyes, RN, BSN



David Johnson



Kevin Johnston



Pamela McConeghy



George Moses



Mike Murphy



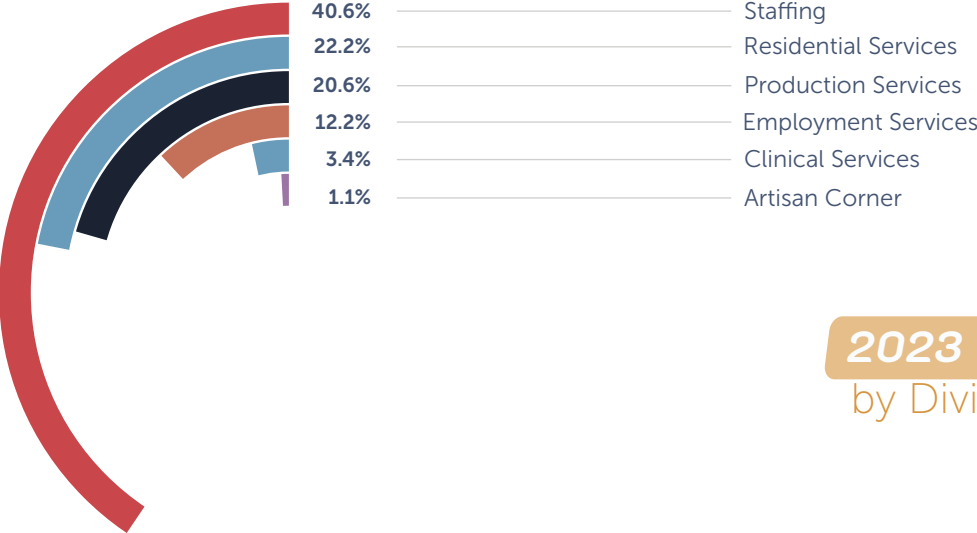
Meg Novacek

Financials:

Total Revenue & Total Expenses

2023 REVENUE by Division

Staffing	36.9%
Residential Services	25.7%
Production Services	18.5%
Employment Services	14.6%
Clinical Services	3.3%
Artisan Corner	0.75%
Public Support	0.01%



2023 EXPENSES by Division

Percentages shown depict each division’s respective impact on the calculated total value for each category.

Changing Lives

WSC Work Skills CORPORATION

WSC's 30,000 square foot plant is located at our headquarters in Livingston County, Michigan. WSC has state-of-the-art material movement equipment. WSC's leadership has a combined history of over 60 years of production experience.



WSC Work Skills FOUNDATION

The Work Skills Corporation Foundation was established to support the development of innovative programs for people with barriers to employment. Our vision is a community that offers opportunity for everyone with the desire to succeed.



WSC ACADEMY

WSC Academy is a public school academy that follows a student-centered approach in a small, supportive learning environment. WSC Academy recruits students ages 14 to 18 to earn a nationally recognized high school diploma.

Who we are now

After more than 40 years in the business of service, the central vision of Work Skills Corporation remains fundamentally unchanged: to optimize a person's human potential by helping them overcome barriers to employment. From helping people polish their resumes to finding work and job-site accommodations for individuals with disabilities, Work Skills Corporation is dedicated to working with people to help them develop the skills they need to find full and lasting employment. Though WSC has branched out over the years into several other successful ventures, this principle of helping people to better their lives remains at the core of our mission.



Into the new Millennium

The new millennium was a time of diversification for WSC as we expanded our vision from helping persons with disabilities to helping people with any barriers to employment, whether due to disability, lack of education or socioeconomic connections. We began with our staffing service, Action Associates.



2002 - 2011

Summer youth programs followed in 2002, and then came Action Home Health Care in 2007 and Studio West followed in 2011. As we approach our 40th anniversary, we celebrate the clients, Board members, staff, volunteers, partner agencies and communities that made our success in serving people possible.



The 1980s and early 1990s

During the 1980s WSC was also awarded contracts with the Michigan Department of Transportation and the Detroit Diesel Corporation. By the early 1990s, Work Skills was a leader in work placement program for individuals with disabilities in southeastern Michigan.



The central vision
of Work Skills Corporation
remains fundamentally
unchanged: to optimize
a person's human potential



A MESSAGE TO OUR 2023 VISION PARTNERS

Thank You!

Our vision is a community that offers opportunity for everyone with the desire to succeed.

The Annual Vision Partner Program builds strong and sustainable partnerships for the life-changing services that Work Skills provides on a daily basis.

Vision Partners ensure that future opportunities are available for individuals of *all* abilities, allowing them to live empowered and independent lives!

Want to learn more?

Contact Julie Smith, Development Director at 517.304.8003 or julies@wskillsfoundation.org to discuss how to make this partnership best fit your needs.

How can you help?

CONNECT * VOLUNTEER * GIVE

wskillsfoundation.org

2023 Vision Partners



J & M CONSTRUCTION



PATRICK FINANCIAL GROUP, L.L.C.
A REGISTERED INVESTMENT ADVISORY FIRM

www.PatrickFinancialGroup.com



Special Bi-Centennial Edition

ANNUAL REPORT

2023

A compilation of community-based success stories that resonate with the spirit of Work Skills' bicentennial anniversary. This milestone showcases our enduring commitment to empowering individuals in Learning, Working, and Living.

Over the years, our mission has expanded while consistently hitting our mark on community objectives, leaving an indelible mark on the path to success for all.

1973 - 2023

Work Skills Corporation - Corporate Headquarters
50th Annual Open House Celebration



Our Journey

50
YEARS
1973-2023



50,000+

TOTAL PARTICIPANTS SERVED SINCE 1973

\$116,636

ARTISAN CORNER ARTISTS COMMISSION

\$25,277,012

IN PARTICIPANT WORKER WAGES

\$50,000,000+

EARNED BY STAFFING EMPLOYEES

100 Summit St.
Brighton, MI 48116
(810) 227-4868 | wskills.com

